

# Metals and Energy – Market Outlook

13 April 2017

research@bmastock.com  
033 40110063

**INDIA'S LEADING EQUITY BROKING HOUSE**

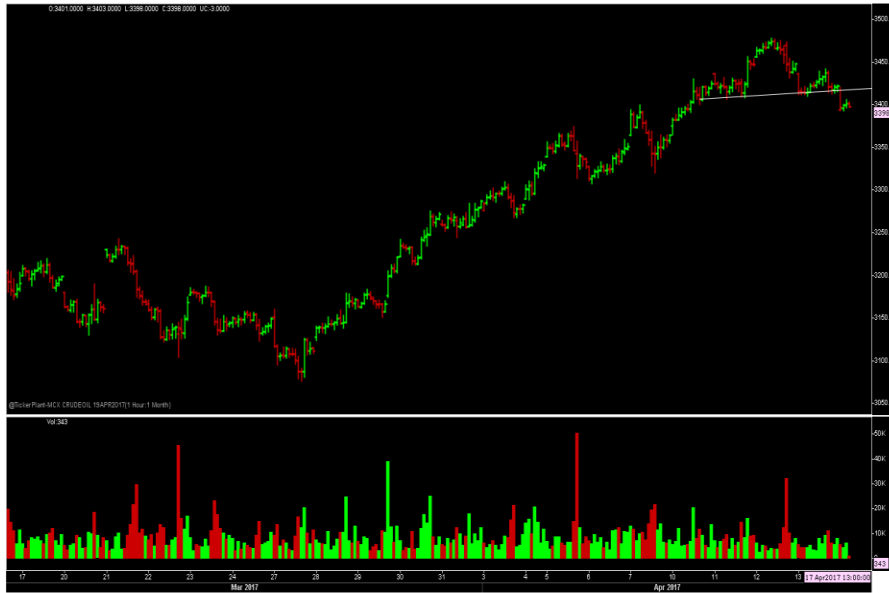


MARKET OUTLOOK - EQUITY, CURRENCY & COMMODITY

# Price Recap

Commodity	Net Change	% Change	Open	High	Low	Close	Vol	Open Intr
<b>Multi Commodity Exchange - MCX</b>								
Gold	180.00	0.62	29,300.00	29,433.00	29,281.00	29,409.00	9,277	7,592
Silver	369.00	0.87	42,301.00	42,694.00	42,301.00	42,571.00	11,570	11,996
Crude Oil	-24.00	-0.70	3,436.00	3,442.00	3,410.00	3,420.00	84,618	12,951
Natural Gas	0.40	0.19	205.60	209.00	203.00	207.10	51,692	6,641
Aluminum	0.75	0.61	122.80	123.30	122.25	123.10	5,412	1,727
Copper	2.45	0.67	365.40	368.20	364.60	366.20	34,323	18,823
Lead	-0.75	-0.52	145.70	146.20	144.30	144.70	13,068	2,019
Nickel	-1.70	-0.27	634.40	634.40	625.30	626.70	29,481	36,040
Zinc	0.50	0.30	168.40	169.25	165.55	168.60	26,540	5,014
<b>CHICAGO MERCANTILE EXCHANGE (CME) - COMEX</b>								
Gold	10.40	0.81	1,288.30	1,290.70	1,283.80	1,288.50	229,082	336,135
Silver	0.21	1.15	18.51	18.61	18.42	18.51	82,108	133,630
<b>New York Mercantile Exchange - NYMEX</b>								
Crude Oil	0.07	0.13	52.85	53.39	52.82	53.18	435,235	211,355
Natural Gas	0.04	1.26	3.18	3.24	3.15	3.23	165,610	178,467
<b>London Metal Exchange - LME</b>								
Aluminum	20.00	1.05	1,902.00	1,918.50	1,898.00	1,918.50	14,119	0
Copper	58.00	1.03	5,625.00	5,682.50	5,624.50	5,682.50	16,029	0
Lead	-2.50	-0.11	2,246.50	2,240.00	2,235.00	2,240.00	3,323	0
Nickel	0.00	0.00	9,705.00	9,705.00	9,655.00	9,705.00	6,074	0
Zinc	20.50	0.79	2,604.50	2,622.50	2,575.50	2,622.50	16,036	0

# Technical Check



**H&S formation is seen in Crude oil hourly chart. The short term outlook is negative and we can see prices drifting lower in coming time.**

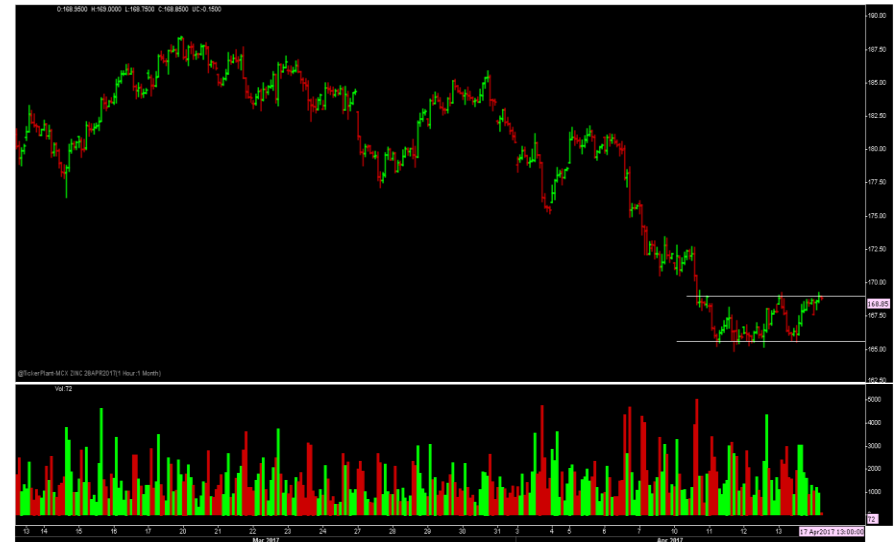
**On downside, support is placed at 3270 mark. However a midway support is also seen at 3345 level.**

**On the ascent, resistance to come is set at 3425-3435 zone. The said band is likely to remain intact in coming time.**

**Zinc prices are trading near the resistance level as shown in the given chart.**

**The short term outlook is neutral till prices are trading in the range of 169 to 165. A break above or below the range will set further direction in Zinc.**

**However, there are high chances of breakout and we can see prices moving higher in coming time.**



# COMEX Warehouse Update

<b>Gold (Troy Ounce)</b>						
	<b>PREV TOTAL</b>	<b>RECEIVED</b>	<b>WITHDRAWN</b>	<b>NET CHANGE</b>	<b>ADJUSTMENT</b>	<b>TOTAL TODAY</b>
TOTAL REGISTERED	990,497	0	0	0	0	990,497
TOTAL ELIGIBLE	7,979,738	0	289	-289	0	7,979,448
COMBINED TOTAL	8,970,235	0	289	-289	0	8,969,945
<b>Silver (Troy Ounce)</b>						
	<b>PREV TOTAL</b>	<b>RECEIVED</b>	<b>WITHDRAWN</b>	<b>NET CHANGE</b>	<b>ADJUSTMENT</b>	<b>TOTAL TODAY</b>
TOTAL REGISTERED	30,289,243	0	0	0	0	30,289,243
TOTAL ELIGIBLE	159,574,811	1,205,429	1,276,558	-71,128	0	159,503,683
COMBINED TOTAL	189,864,054	1,205,429	1,276,558	-71,128	0	189,792,926

# LME Warehouse Update

<b>Base Metals</b>							
	<b>OpeningStock</b>	<b>DeliveryIn</b>	<b>DeliveryOut</b>	<b>ClosingStock</b>	<b>NetChg</b>	<b>WAR.</b>	<b>C.WR.</b>
ALUMINIUM	1774950	0	15100	1759850	-15100	1099250	660600
COPPER	258825	600	2225	257200	-1625	172750	84450
LEAD	169825	0	1025	168800	-1025	77975	90825
NICKEL	369678	510	750	369438	-240	276864	92574
ZINC	364050	0	2200	361850	-2200	183100	178750

# Pivot Points

	Res 3	Res 2	Res 1	Pivot	Sup 1	Sup 2	Sup 3
<b>Multi Commodity Exchange - MCX</b>							
Gold	29,619.67	29,526.33	29,467.67	29,374.33	29,315.67	29,222.33	29,398.33
Silver	43,136.00	42,915.00	42,743.00	42,522.00	42,350.00	42,129.00	42,645.00
Crude Oil	3,470.00	3,456.00	3,438.00	3,424.00	3,406.00	3,392.00	3,446.00
Natural Gas	215.73	212.37	209.73	206.37	203.73	200.37	208.27
Aluminum	124.57	123.93	123.52	122.88	122.47	121.83	123.08
Copper	371.67	369.93	368.07	366.33	364.47	362.73	368.33
Lead	147.73	146.97	145.83	145.07	143.93	143.17	146.57
Nickel	641.40	637.90	632.30	628.80	623.20	619.70	636.50
Zinc	173.75	171.50	170.05	167.80	166.35	164.10	168.45
<b>CHICAGO MERCANTILE EXCHANGE (CME) - COMEX</b>							
Gold	1,298.43	1,294.57	1,291.53	1,287.67	1,284.63	1,280.77	1,289.87
Silver	18.80	18.70	18.61	18.51	18.42	18.32	18.61
<b>New York Mercantile Exchange - NYMEX</b>							
Crude Oil	54.01	53.70	53.44	53.13	52.87	52.56	53.34
Natural Gas	3.36	3.30	3.26	3.21	3.17	3.11	3.22
<b>London Metal Exchange - LME</b>							
Aluminum	1,945.83	1,932.17	1,925.33	1,911.67	1,904.83	1,891.17	1,911.67
Copper	5,759.83	5,721.17	5,701.83	5,663.17	5,643.83	5,605.17	5,663.17
Lead	2,246.67	2,243.33	2,241.67	2,238.33	2,236.67	2,233.33	2,238.33
Nickel	9,771.67	9,738.33	9,721.67	9,688.33	9,671.67	9,638.33	9,688.33
Zinc	2,685.17	2,653.83	2,638.17	2,606.83	2,591.17	2,559.83	2,606.83



**SEBI Registration Number: INH300002894**

**RESEARCH ANALYSTS REGULATIONS, 2014**

**BMA WEALTH CREATORS LIMITED**

Address: Vishwakarma II, 29-5A, Dr. Ambedkar Sarani, Topsia Road, Kolkata - 700 046

CALL: 033-40110099 | Toll Free Number: 18602662131

Web: [www.bmawc.com](http://www.bmawc.com)

Email: [research@bmastock.com](mailto:research@bmastock.com) | [investor.complaints@bmastock.com](mailto:investor.complaints@bmastock.com)

Facebook: [www.facebook.com/bmawealth](http://www.facebook.com/bmawealth) | Twitter: [www.twitter.com/bmawealth](http://www.twitter.com/bmawealth)

---

**Disclaimer:** This document is for private circulation only. Neither the information nor any opinion expressed constitutes an offer, or any invitation to make an offer, to buy or sell any securities or any options, future or other derivatives related to such securities. BMA Wealth Creators Ltd. or any of its associates or employees do not accept any liability whatsoever direct or indirect that may arise from the use of the information herein. BMA Wealth Creators Ltd. and its affiliates may trade for their own accounts as market maker, block positional, specialist and/or arbitrageur in any securities of this issuer (s) or in related investments, may be on the opposite side of public orders. BMA Wealth Creators Ltd. and its affiliates, directors, officers, employees, employee benefit programs may have a long or short position in any securities of this issuer (s) or in related investments no matter content herein may be reproduced without the prior permission of BMA Wealth Creators Ltd. While there report has been prepared on the basis of published/other publicly available information considered reliable, we are unable to accept any liability for the accuracy of its contents.

---